

From: Warren, Jeffrey J. [mailto:JEFFREY.J.WARREN@saic.com]
Sent: Monday, July 16, 2012 1:40 PM
To: Jennifer Reese
Cc: Stephen M. Snyder; Alan Miller; Rodney.Myers@harley-davidson.com
Subject: RE: Harley-Davidson - Building 58 GPR

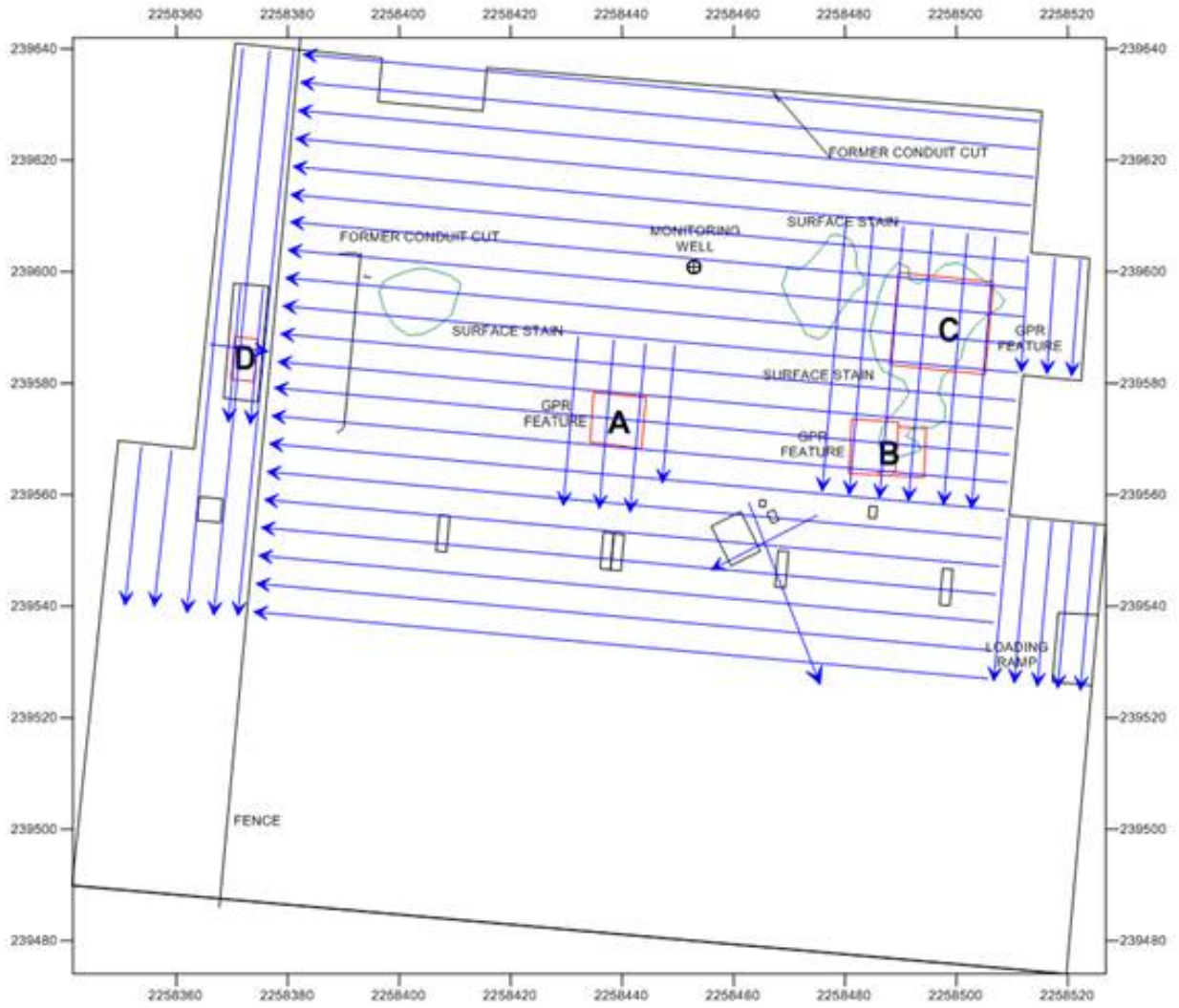
Attached is a file containing the mapped features that were marked in the field. These data are in US State Plane, Pennsylvania South 3702, US Feet. A file containing the approximate location of GPR traverses has not been provided at this time.

Below is a quick summary of the GPR efforts conducted at Building 58 on Friday. No information was known about the approximate location or size of the suspect pit. Four anomalous areas were identified and ranked in order.

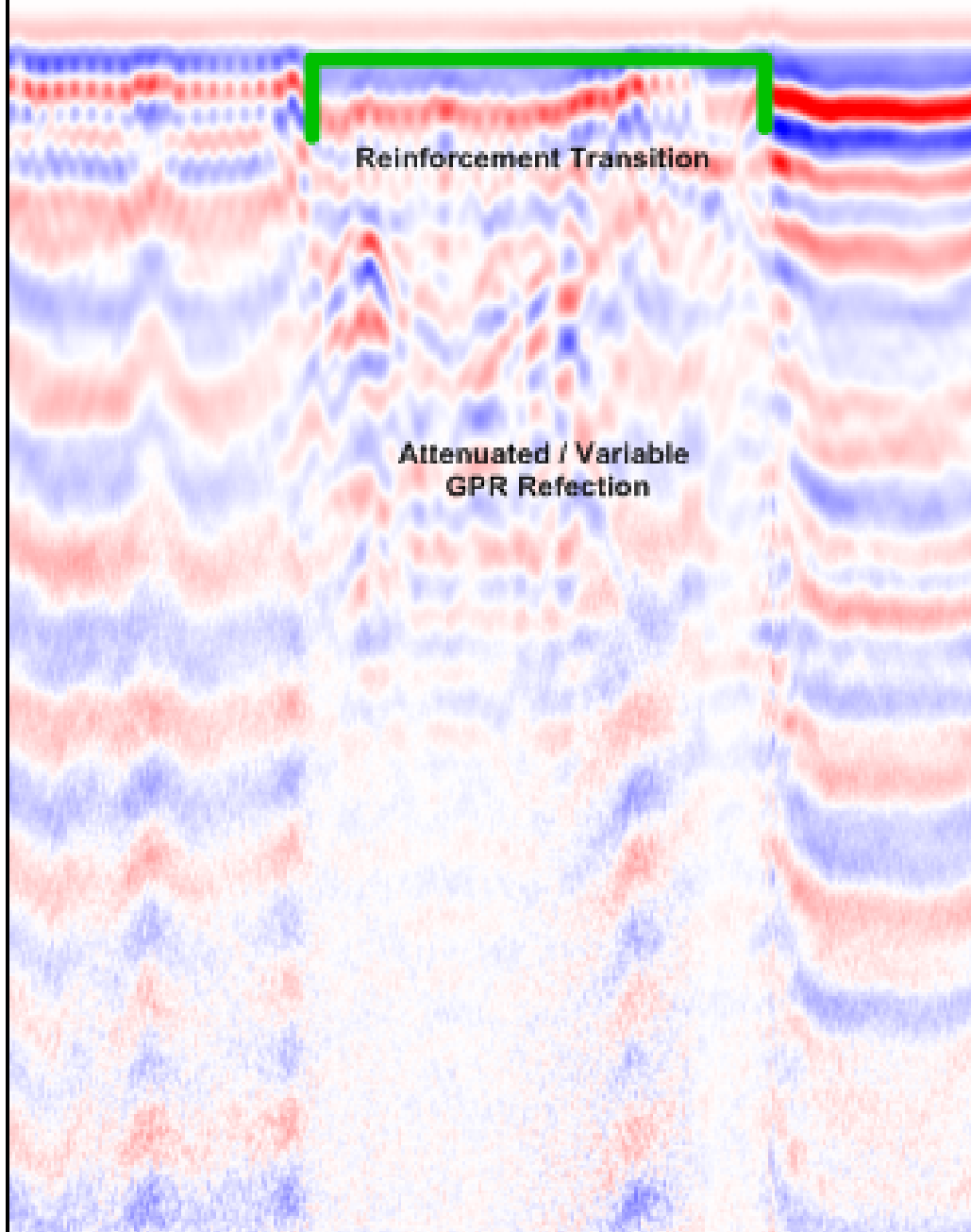
- **Anomalous Area A** Revealed a transitional reinforcement and attenuated GPR signal at depth. Initially, no surface expression was obvious. However, after close inspection, this area appeared to coincide with the limits of minor cracks in the slab
- **Anomalous Area B** Revealed a transitional reinforcement and attenuated GPR signal at depth. This area also coincided with newer concrete slab.
- **Anomalous Area C** Revealed a transitional reinforcement and attenuated GPR signal at depth. This area also coincided with newer concrete slab.
- **Anomalous Area D** Revealed a high amplitude reflection at depth. This feature may be a result of a utility or other historic subsurface structure.

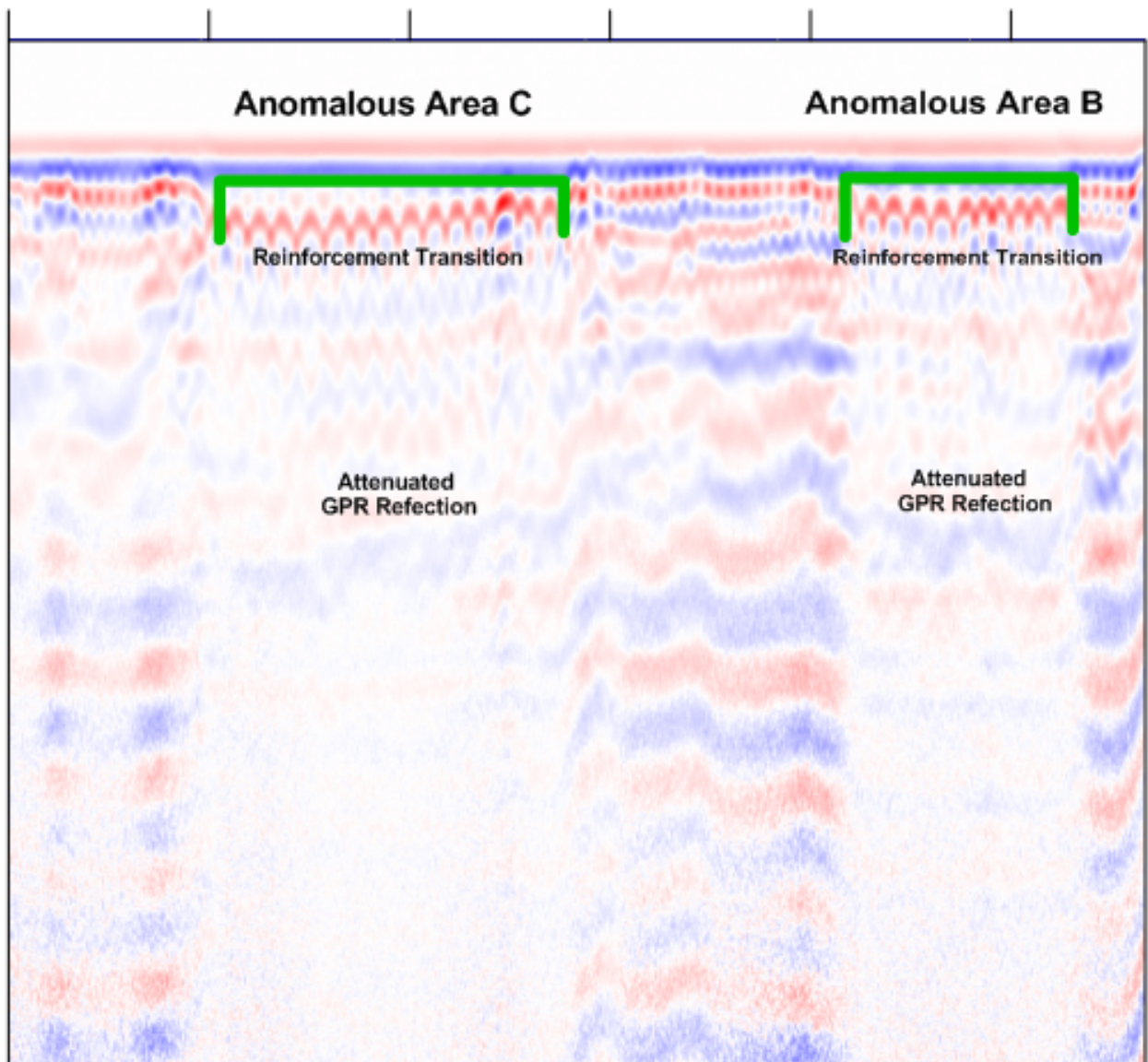
At this time, no written report has been requested.

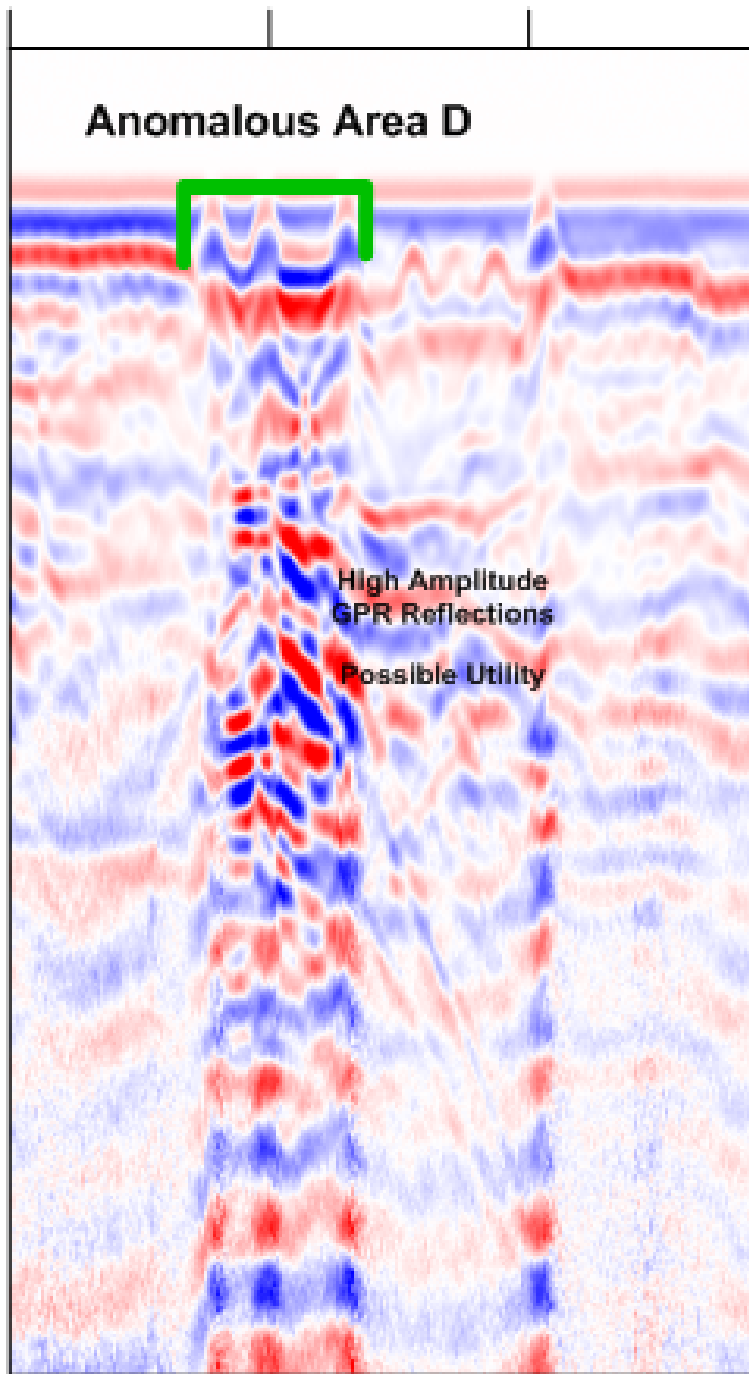
Thanks,
Jeff



Anomalous Area A







Jeffrey J. Warren, PG

Project Manager | Water, Environment & Transportation
SAIC Energy, Environment & Infrastructure, LLC (SEE&I)
office: 717-901-8828 | mobile: 717-315-9328